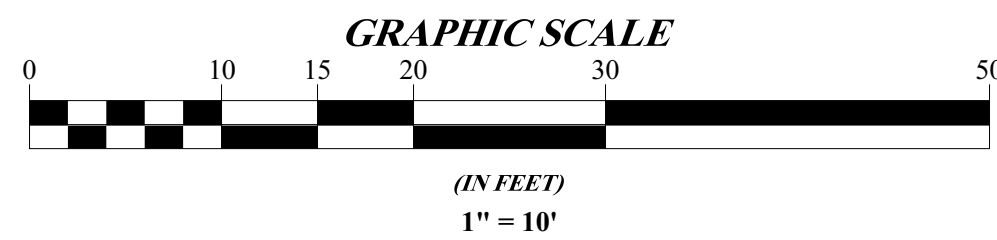
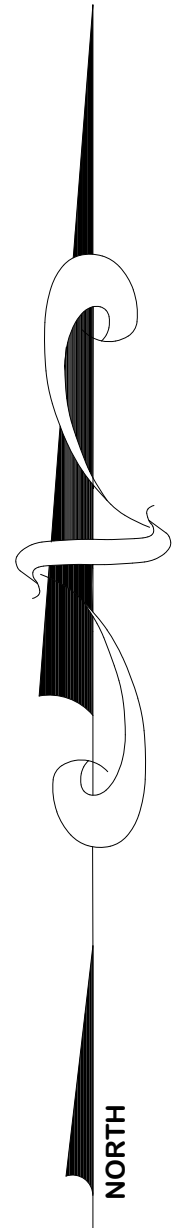


## LEGEND

	EXISTING CONCRETE
	PROPOSED CONCRETE
	EXISTING ASPHALT PAVEMENT (TO REMAIN)
	PROPOSED ASPHALT PAVEMENT
	PROPOSED STOP SIGN
	PROPOSED SEWER CLEAN-OUT
	EXISTING ELEVATION (NAVD)
	PROPOSED ELEVATION (NAVD)
	PROPOSED FIRE HYDRANT
	PROPOSED DRAINAGE FLOW ARROW
	PROPOSED SITE LIGHT
	EXISTING WATER LINE
	EXISTING GRAVITY SEWER MAIN
	EXISTING STORM DRAINAGE MAIN
	EXISTING GAS MAIN
	EXISTING UNDERGROUND ELECTRIC LINE
	EXISTING UNDERGROUND TELECOMMUNICATIONS LINE
	EXISTING WATER REUSE MAIN
	EXISTING OVERHEAD UTILITY WIRES
	PROPOSED TYPE D CONCRETE CURB

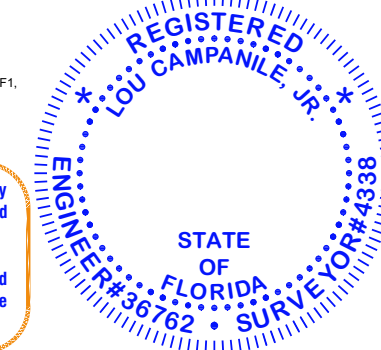


Lou Campanile



Digitally signed by Lou Campanile  
DN: cn=Lou Campanile,  
ou=Campanile & Associates, Inc.,  
email=lou@campanile.com, c=US  
Date: 2024.10.18 13:48:40-0500

This item has been digitally signed and sealed by  
Lou Campanile, Jr., P.E., P.L.S., on the date and  
time shown in his digital signature.  
Printed copies of this document are not considered  
signed and sealed and the digital signature must be  
verified on any electronic copies.



CAMPANILE & ASSOCIATES, INC.  
ENGINEERS PLANNERS SURVEYORS

6420 MAHI DRIVE  
CORAL GABLES, FLORIDA 33158-1841  
TEL: (305) 971-1988  
LB 1678

10/9/24

Lou Campanile, Jr.  
Professional Engineer No. 38792  
Professional Surveyor No. 4338  
State of Florida

for  
RJS ARCHITECTS, INC.

ELIAS APARTMENT BUILDING  
216 SE 23 AVENUE  
POMPAÑO BEACH, FLORIDA 33062-5304

**PAVING, GRADING & DRAINAGE PLAN**

PROJECT NO. 5391  
DATE 10/9/24

REVISIONS


DRAWING  
PAGE 3  
SHEET 3 OF 12

### NOTES:

- DESIGN WATER ELEVATION = 1.5 FEET, NAVD (PER PLATE WM 2.1).
- FUTURE CONDITIONS 100-YEAR FLOOD ELEVATION = 7.0 FEET, NAVD (PER PLATE WM 13.1).
- ELEVATIONS SHOWN HEREON ARE BASED ON NORTH AMERICAN VERTICAL DATUM (NAVD - 1988). TO CONVERT TO NATIONAL GEODETIC VERTICAL DATUM (NGVD - 1929) ADD 1.59'.
- ALL BAFFLES AND WEIRS INSTALLED IN DRAINAGE STRUCTURES ON THIS PROJECT SHALL BE REMOVABLE.
- "PP" DENOTES "HP STORM - DUAL WALL - PP PIPE" AS MANUFACTURED BY ADVANCED DRAINAGE SYSTEMS, INC., OR APPROVED EQUAL.
- ALL PROPOSED CONCRETE SLABS & SIDEWALKS OUTSIDE THE PROPOSED BUILDING SHALL BE 6" THICK MINIMUM.

### DRAINAGE STRUCTURE SCHEDULE

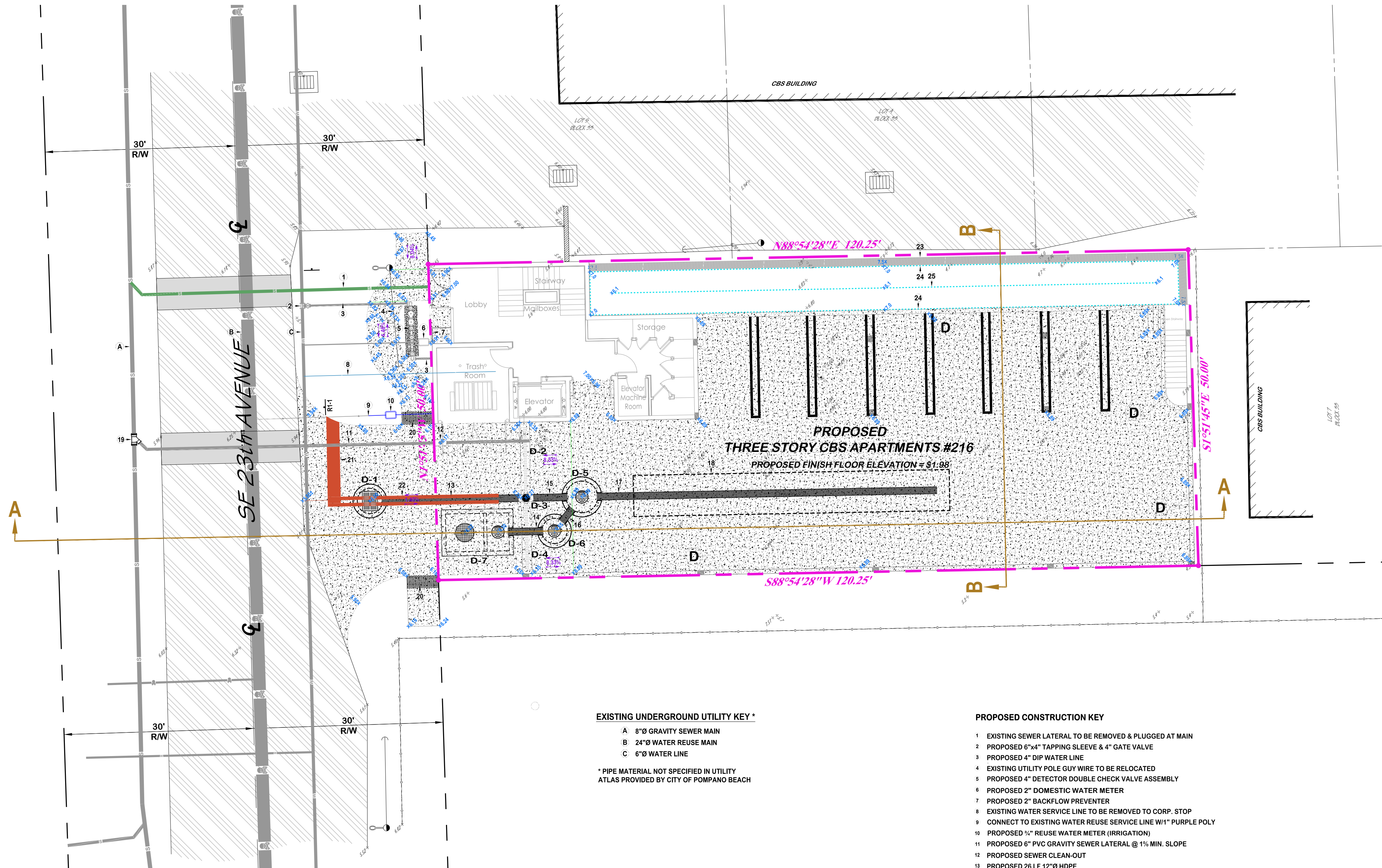
STRUCTURE NO.	STRUCTURE SIZE	RIM ELEVATION	INVERT ELEVATIONS	SUMP ELEVATION	BAFFLES
D-1	4"Ø	6.00	1.5 E (12"Ø)	(-) 2.5	
D-2	15"Ø	6.27	5.27		
D-3	15"Ø	6.27	5.27 N (6"Ø), 1.5 E (12"Ø), 5.27 S (6"Ø), 1.5 W (12"Ø)	0.5	
D-4	15"Ø	6.27	5.27		
D-5	5"Ø	6.89	1.5 E (15"Ø), 1.5 SW (12"Ø), 1.5 W (18"Ø)	(-) 3.5	E & SW
D-6	4"Ø	6.65	1.5 NE (12"Ø), 1.5 W (12"Ø)	(-) 3.5	W
D-7	6"x10"	6.30	1.5 E (12"Ø)	(-) 3.5	

#### DRAINAGE STRUCTURE NOTES:

- STRUCTURE SIZES ARE INSIDE DIMENSIONS (E.G. 5"Ø OR 6"x10").
- STRUCTURE D-5 & D-6 ARE DRAINAGE MANHOLES.
- STRUCTURE D-3 IS A NYLOPLAST 15"Ø DRAIN BASIN (PART NUMBER 2815AG) WITH SOLID COVER (PART NUMBER 1599CGC) AS MANUFACTURED BY ADVANCED DRAINAGE SYSTEMS, INC., OR APPROVED EQUAL.
- STRUCTURES D-2 & D-4 ARE TRENCH DRAINS. SEE SHEET C-X FOR DETAILS.
- STRUCTURE D-7 IS A DRAINAGE WELL CONTROL STRUCTURE. SEE SHEET C-X FOR DETAILS.
- THE SOUTHWEST BAFFLE ON STRUCTURE D-5 IS AN INVERTED BAFFLE. TOP OF BAFFLE ELEVATION = 4.00 NAVD.

#### WATER & SEWER DEMAND:

7 ONE-BEDROOM APARTMENTS @ 250 GPD EACH = 1,750 GALLONS



#### EXISTING UNDERGROUND UTILITY KEY \*

- A 8"Ø GRAVITY SEWER MAIN
- B 24"Ø WATER REUSE MAIN
- C 6"Ø WATER LINE

\* PIPE MATERIAL NOT SPECIFIED IN UTILITY ATLAS PROVIDED BY CITY OF POMPAÑO BEACH

#### PROPOSED CONSTRUCTION KEY

- EXISTING SEWER LATERAL TO BE REMOVED & PLUGGED AT MAIN
- PROPOSED 6"x4" TAPPING SLEEVE & 4" GATE VALVE
- PROPOSED 4" DIP WATER LINE
- EXISTING UTILITY POLE GUY WIRE TO BE RELOCATED
- PROPOSED 4" DETECTOR DOUBLE CHECK VALVE ASSEMBLY
- PROPOSED 2" DOMESTIC WATER METER
- PROPOSED 2" BACKFLOW PREVENTER
- EXISTING WATER SERVICE LINE TO BE REMOVED TO CORP. STOP
- CONNECT TO EXISTING WATER REUSE SERVICE LINE WITH PURPLE POLY
- PROPOSED 1/2" REUSE WATER METER (IRRIGATION)
- PROPOSED 6" PVC GRAVITY SEWER LATERAL @ 1% MIN. SLOPE
- PROPOSED 6"x6" PVC SEWER WYE
- PROPOSED 26 LF 12"Ø HDPE
- PROPOSED 6 LF 12"Ø HDPE
- PROPOSED 5 LF 12"Ø HDPE
- PROPOSED 3 LF 12"Ø HDPE
- PROPOSED 5 LF 12"Ø HDPE
- PROPOSED 50 LF EXFILTRATION TRENCH
- PROPOSED 6"x6" PVC SEWER WYE
- PROPOSED DETECTABLE WARNING STRIP
- PROPOSED 24" WHITE STOP BAR
- PROPOSED 25 LF 6" DOUBLE YELLOW STRIPING
- PROPOSED PERIMETER BERM, TOP = ELEVATION 7.5 NAVD
- PROPOSED ELEVATION 7.0 NAVD CONTOUR
- PROPOSED ELEVATION 6.1 NAVD CONTOUR

**DRC**

PZ24-120000-23  
12/18/2024